

# SOLENOIDS



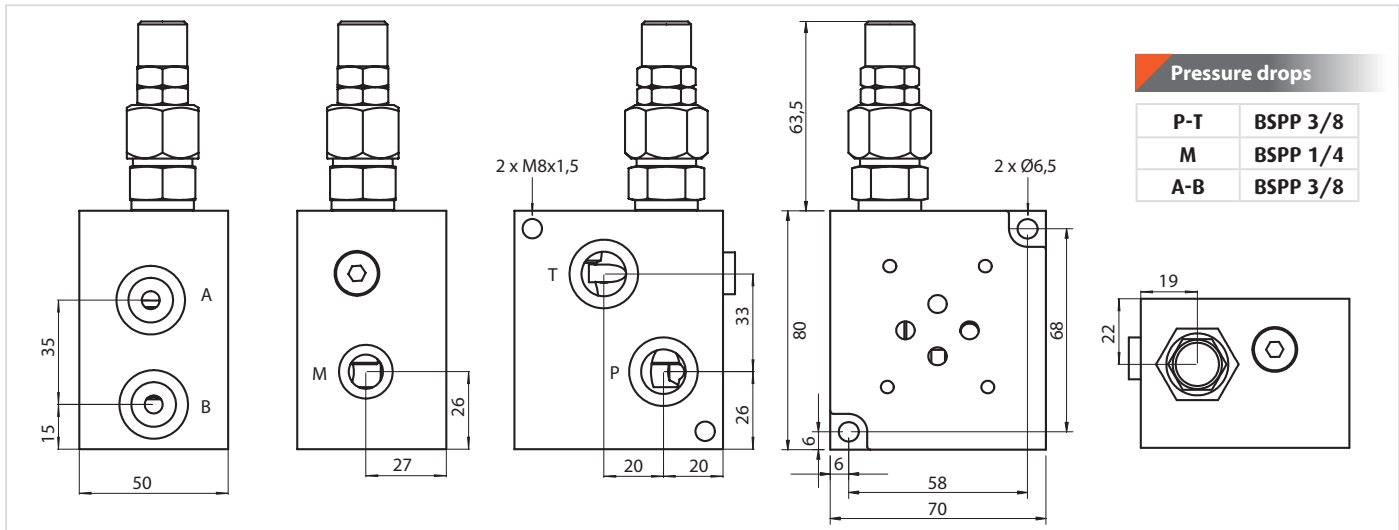
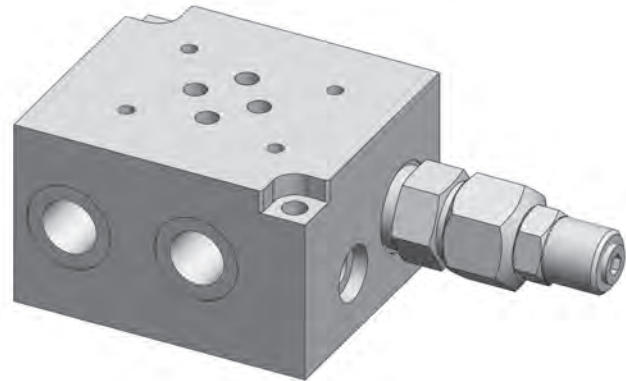
**SOLENOID VALVES**



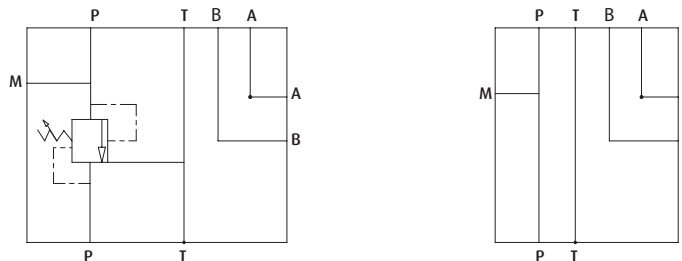
### Ordering code

1	2	3	4
<b>HS06L</b>	<b>*</b>	<b>*</b>	<b>*</b>

<b>1</b>	Single manifolds for cetop valves	<b>HS06L</b>
	Without relief valve	<b>0</b>
	Machined for relief valve	<b>Z</b>
<b>2</b>	With relief valve	HCVR.M20
		HCVR.M22
		HCVR.G12
		HCVR.M24
<b>3</b>	Spring	5-100 bar
		10-210 bar
		20-350 bar
<b>4</b>	Aluminium	<b>A</b>
	Steel	<b>S</b>



### Hydraulic circuit



### Technical Characteristics

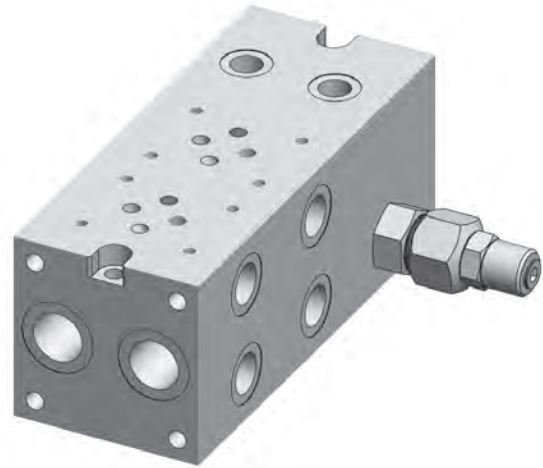
CODE	MAX. FLOW	MAX. PRESSURE	APPR. WEIGHT (Kg)		RELIEF VALVE
			A*	S**	
HS06L0A/S	40 l/min	250 bar (A*) 300 bar (S*)	0,67	1,9	HCVR.M20 (Standart) (Relief valve specification is at page 8)
HS06LZA/S			0,65	1,8	
HS06LR1BA/S			0,85	2,4	

\* Aluminium \*\* Steel

### Ordering code

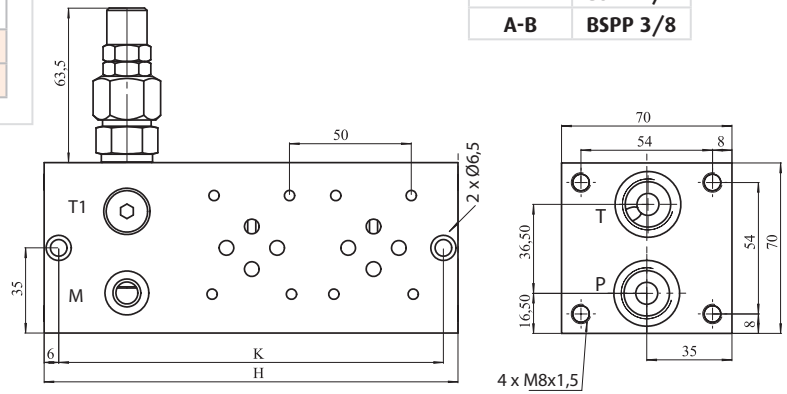
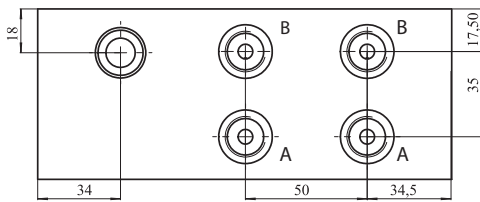
1	2	3	4	5	6
HM06L	*	*	*	*	*

		*
<b>1</b>	Monoblocco in alluminio per valvole cetop Aluminium multiple manifolds for cetop valves	<b>HM06L</b>
	Predisposta per valvola di massima Machined for relief valve	<b>Z</b>
<b>2</b>	Con valvola di massima With relief valve	HCVR.M20
		HCVR.M22
		HCVR.G12
		HCVR.M24
<b>3</b>	Molla Spring	5-100 bar
		10-210 bar
		20-350 bar
<b>4</b>	Collegamento in parallelo Parallel connection	<b>P</b>
	Collegamento in serie Serial connection	<b>S</b>
<b>5</b>	Postazioni stazioni Number of stations	2
		3
		4
		5
		6
<b>6</b>	Aluminio Aluminium	<b>A</b>
		Acciaio Steel



### Pressure drops

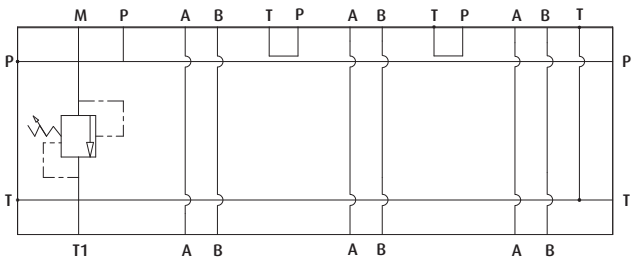
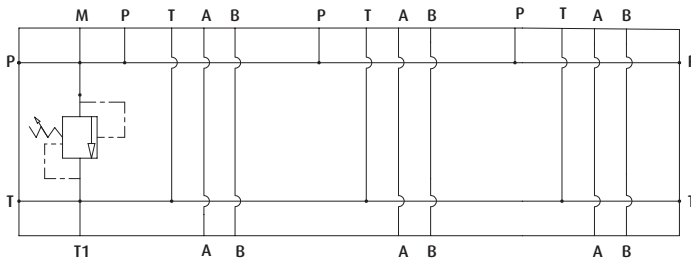
P-T	BSPP 1/2
M	BSPP 1/4
A-B	BSPP 3/8



### Hydraulic circuit

Parallel connection

Serial connection



### Technical Characteristics

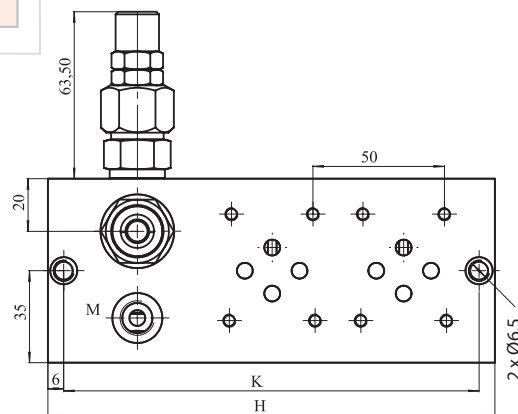
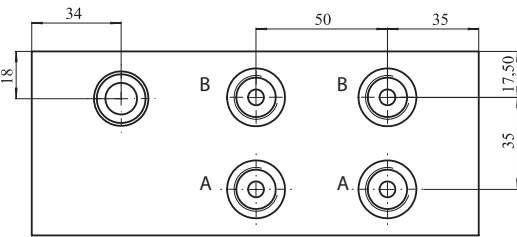
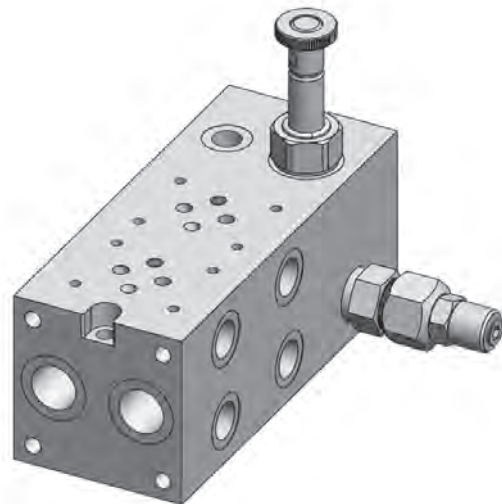
CODE	NUMBER OF STATION	H (mm)	K (mm)	MAX. FLOW	MAX. PRESSURE	APPR. WEIGHT (Kg)		RELIEF VALVE
						A*	S**	
HM06LR1BP2A/S - HM06LR1BS2A/S	2	170	158	40 l/min	250 bar (A*) 300 bar (S*)	2,15	6	HCVR.M20 (Relief valve specification is at page 8)
HM06LR1BP3A/S - HM06LR1BS3A/S	3	220	208			2,75	7,7	
HM06LR1BP4A/S - HM06LR1BS4A/S	4	270	258			3,35	9,4	
HM06LR1BP5A/S - HM06LR1BS5A/S	5	320	308			3,95	11,1	
HM06LR1BP6A/S - HM06LR1BS6A/S	6	370	358			4,55	12,8	
HM06LR1BP7A/S - HM06LR1BS7A/S	7	420	408			5,15	14,5	
HM06LR1BP8A/S - HM06LR1BS8A/S	8	470	458			5,75	16,2	

\* (A) Alluminio - Aluminium \*\* (S) Acciaio - Steel

### Ordering code

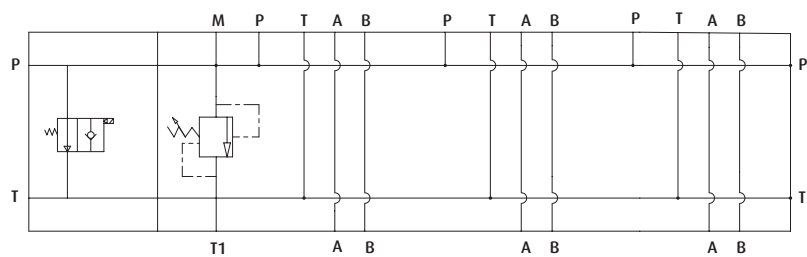
1	2	3	4	5
HM06V	*	*	*	*

		*
<b>1</b>	Monoblocco in alluminio per valvole cetop Aluminium multiple manifolds for cetop valves	<b>HM06V</b>
	Predisposta per valvola di massima Machined for relief valve	<b>Z</b>
<b>2</b>	Con valvola di massima With relief valve	HCVR.M20
		HCVR.M22
		HCVR.G12
		HCVR.M24
<b>3</b>	Molla Spring	5-100 bar
		10-210 bar
		20-350 bar
<b>4</b>	Postazioni stazioni Number of stations	2
		3
		6
		7
		8
<b>5</b>	Aluminio Aluminium Acciaio Steel	<b>A</b>
		<b>S</b>



Pressure drops	
P-T	BSPP 1/2
M	BSPP 1/4
A-B	BSPP 3/8

### Hydraulic circuit



### Technical Characteristics

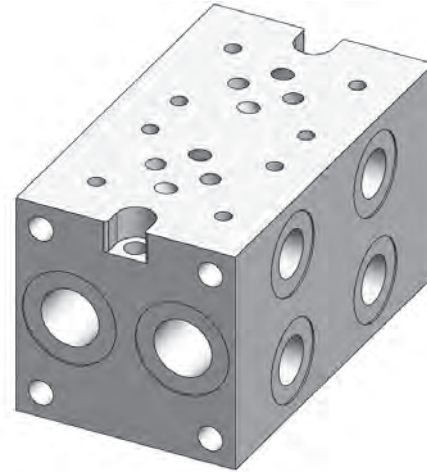
CODE	NUMBER OF STATION	H (mm)	K (mm)	MAX. FLOW	MAX. PRESSURE	APPR. WEIGHT (Kg)		RELIEF VALVE	BYPASS VALVE
						A*	S**		
HM06VR1B2A/S	2	170	158	40 l/min	250 bar (A*) 300 bar (S*)	2,15	6	HCVR.M20 (Standart) (Relief valve specification is at page 8)	HCVSO.S08 (Bypass valve specification is at page 9)
HM06VR1B3A/S	3	220	208			2,75	7,7		
HM06VR1B4A/S	4	270	258			3,35	9,4		
HM06VR1B5A/S	5	320	308			3,95	11,1		
HM06VR1B6A/S	6	370	358			4,55	12,8		
HM06VR1B7A/S	7	420	408			5,15	14,5		
HM06VR1B8A/S	8	470	458			5,75	16,2		

\* (A) Alluminio - Aluminium \*\* (S) Acciaio - Steel

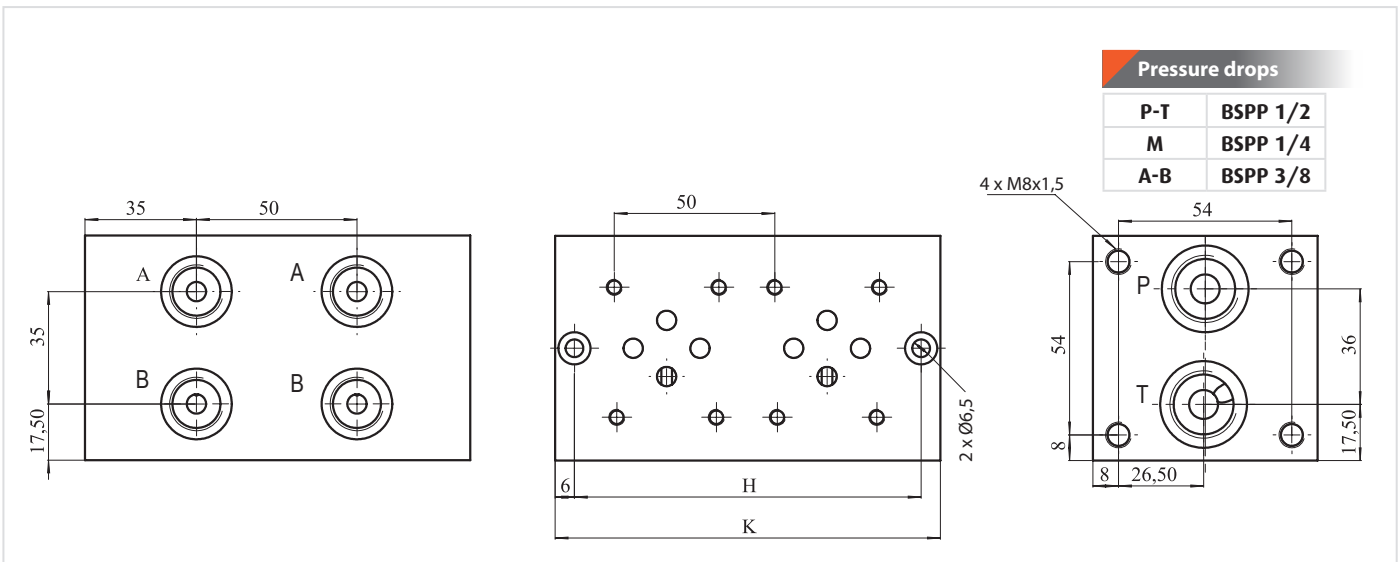


### Ordering code

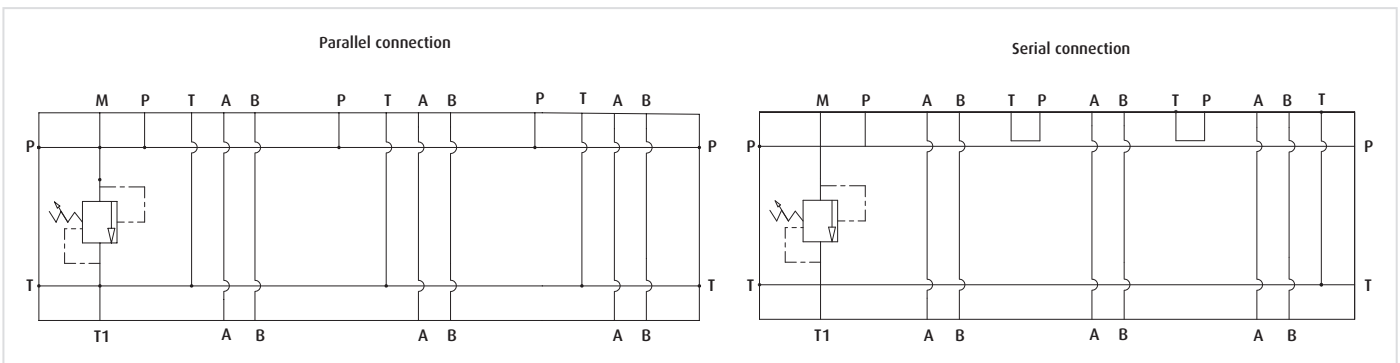
1	2	3	4
<b>HM06B</b>	<b>*</b>	<b>*</b>	<b>*</b>



		<b>*</b>
<b>1</b>	Aluminium multiple manifolds for cetop valves	<b>HM06B</b>
	Parallel connection	<b>P</b>
<b>2</b>	Serial connection	<b>S</b>
	Number of stations	<b>2 3 4 5 6 7 8</b>
	Aluminium	<b>A</b>
<b>4</b>	Steel	<b>S</b>



### Hydraulic circuit



### Technical Characteristics

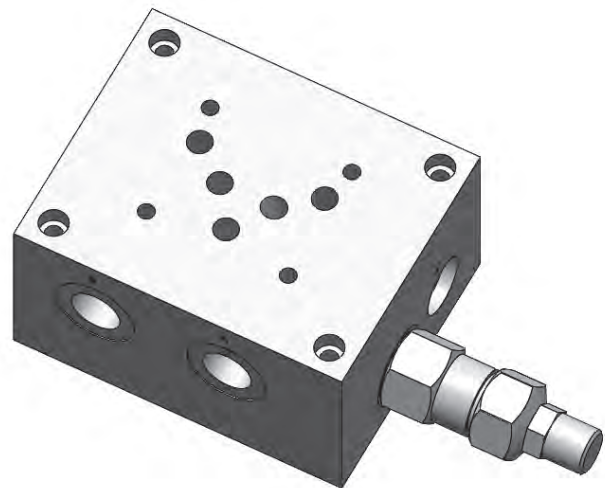
CODE	NUMBER OF STATION	H (mm)	K (mm)	MAX. FLOW	MAX. PRESSURE	APPR. WEIGHT (Kg)	
						A*	S**
HM06BP2A/ - HM06BS2A/S	2	120	108	40 l/min	250 bar (A*) 300 bar (S*)	1,6	4,5
HM06BP3A/S - HM06BS3A/S	3	170	158			2,1	6
HM06BP4A/S - HM06BS4A/S	4	220	208			2,7	7,5
HM06BP5A/S - HM06BS5A/S	5	270	258			3,3	9
HM06BP6A/S - HM06BS6A/S	6	320	308			3,9	10,5
HM06BP7A/S - HM06BS7A/S	7	370	358			4,5	12
HM06BP8A/S - HM06BS8A/S	8	420	408			5,1	13,5

\* (A) Aluminio - Aluminium \*\* (S) Acciaio - Steel

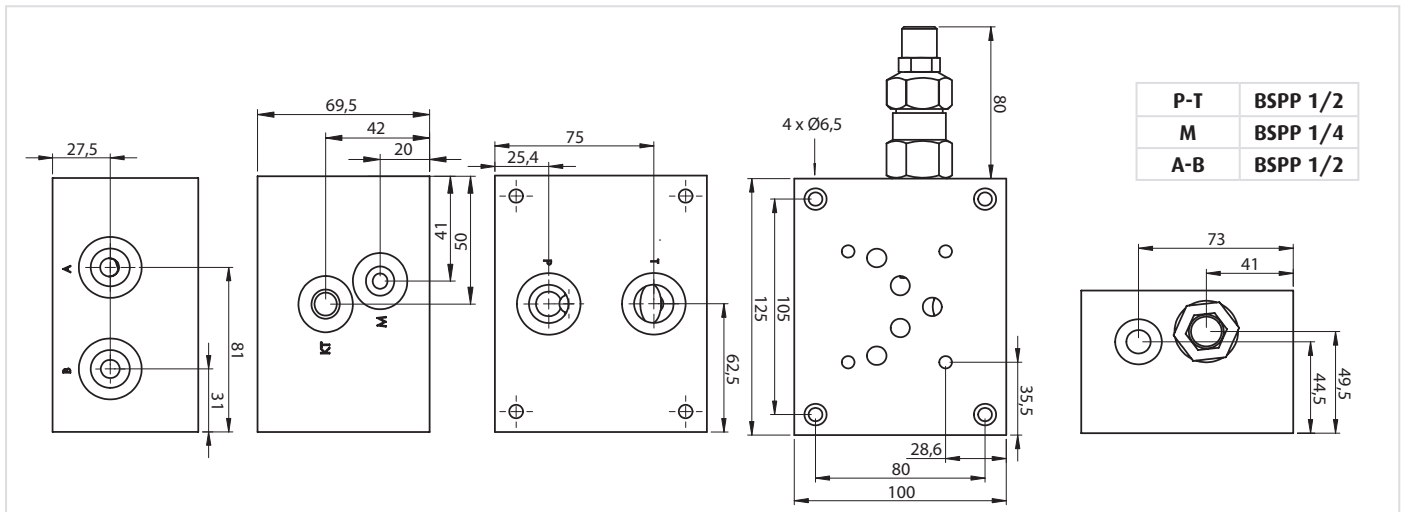
### Ordering code

1	2	3	4
<b>HS10L</b>	<b>*</b>	<b>*</b>	<b>*</b>

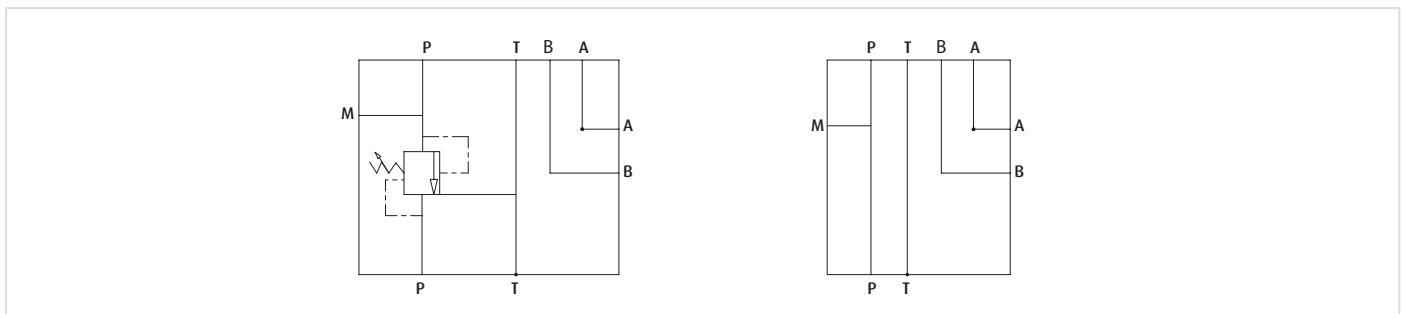
		<b>*</b>
<b>1</b>	<b>Basi singole in per valvole cetop</b> Single manifolds for cetop valves	<b>HS10L</b>
	<b>Senza valvola di massima</b> Without relief valve	<b>0</b>
	<b>Predisposta per valvola di massima</b> Machined for relief valve	<b>Z</b>
<b>2</b>	<b>Con valvola di massima</b> With relief valve	HCVR.M20 <b>R1</b>
		HCVR.M22 <b>R2</b>
		HCVR.G12 <b>R3</b>
		HCVR.M24 <b>R4</b>
<b>3</b>	<b>Molla</b> Spring	5-100 bar <b>Y</b>
		10-210 bar <b>B</b>
		20-350 bar <b>G</b>
<b>4</b>	<b>Aluminio</b> Aluminium	<b>A</b>
	<b>Acciaio</b> Steel	<b>S</b>



### Pressure drops



### Hydraulic circuit



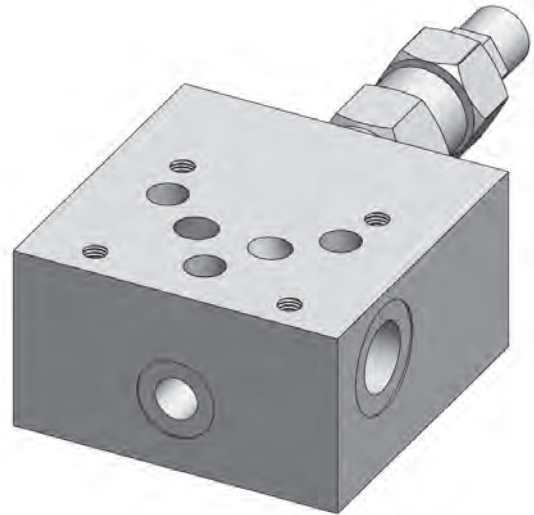
### Technical Characteristics

CODE	MAX. FLOW	MAX. PRESSURE	APPR. WEIGHT (Kg)		RELIEF VALVE
			A*	S**	
HS10L0A/S	80 l/min	210 bar (A*) 300 bar (S*)	2,25	6,4	HCVR.M24 (standard) (Relief valve specification is at page 8)
HS06LZA/S			2,1	6	
HS06LR4BA/S			2,45	6,35	

\* (A) Aluminio - Aluminium \*\* (S) Acciaio - Steel

### Ordering code

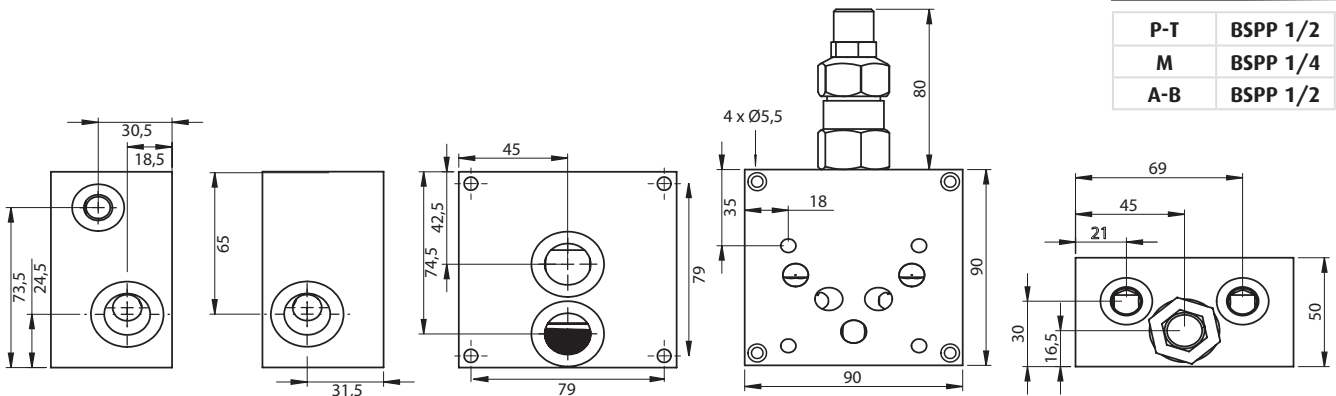
1	2	3	4
HS10LS	*	*	*



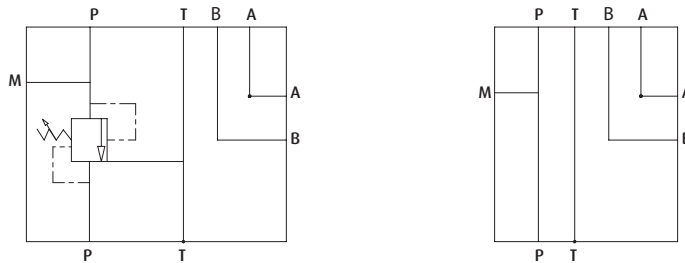
		*
<b>1</b>	Single manifolds for cetop valves	<b>HS10LS</b>
	Without relief valve	<b>0</b>
	Machined for relief valve	<b>Z</b>
<b>2</b>	With relief valve	HCVR.M20 <b>R1</b>
		HCVR.M22 <b>R2</b>
		HCVR.G12 <b>R3</b>
		HCVR.M24 <b>R4</b>
<b>3</b>	Spring	5-100 bar <b>Y</b>
		10-210 bar <b>B</b>
		20-350 bar <b>G</b>
<b>4</b>	Aluminium	<b>A</b>
	Steel	<b>S</b>

### Pressure drops

P-T	BSPP 1/2
M	BSPP 1/4
A-B	BSPP 1/2



### Hydraulic circuit



### Technical Characteristics

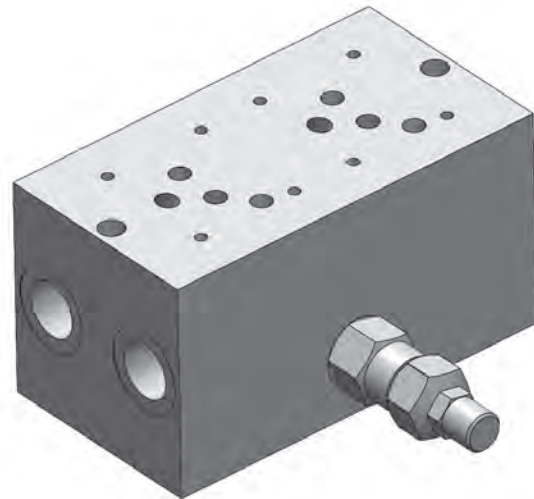
CODE	MAX. FLOW	MAX. PRESSURE	APPR. WEIGHT (Kg)		RELIEF VALVE
			A*	S**	
HS10LS0A/S	80 l/min	210 bar (A*) 300 bar (S*)	1	2,8	HCVR.M24 (standard) (Relief valve specification is at page 8)
HS06LSZA/S			0,9	2,6	
HS06LSR4BA/S			1,25	2,9	

\* (A) Aluminio - Aluminium \*\* (S) Acciaio - Steel



### Ordering code

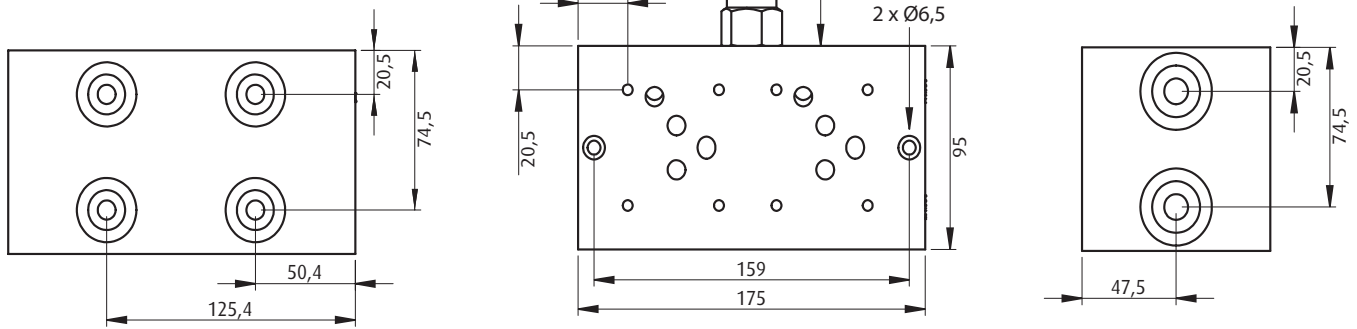
1	2	3	4	5
HM10L	*	*	*	*



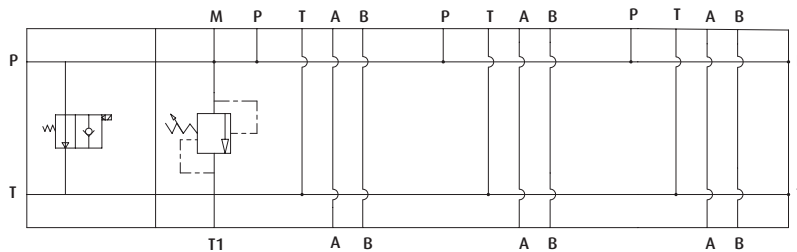
		*
<b>1</b>	Single manifolds for cetop valves	<b>HM10L</b>
	Machined for relief valve	<b>Z</b>
<b>2</b>	With relief valve	HCVR.M20
		HCVR.M22
		HCVR.G12
		HCVR.M24
<b>3</b>	With relief valve	5-100 bar
		10-210 bar
		20-350 bar
<b>4</b>	Number of stations	<b>2</b>
		<b>3</b>
		<b>4</b>
		<b>5</b>
		<b>A</b>
<b>5</b>	Material	Aluminium
		Steel

### Pressure drops

P-T	BSPP 3/4
M	BSPP 1/4
A-B	BSPP 1/2



### Hydraulic circuit



### Technical Characteristics

CODE	NUMBER OF STATION	H (mm)	K (mm)	MAX. FLOW	MAX. PRESSURE	APPR. WEIGHT (Kg)		RELIEF VALVE
						A*	S**	
HM10LR4B2A/S	2	175	159	80 l/min	210 bar (A*) 300 bar (S*)	4	12	HCVR.M24 (standard) (Relief valve specification is at page 8)
HM10LR4B3A/S	3	250	234			5,75	16,5	
HM10LR4B4A/S	4	325	309			7,5	21	
HM10LR4B5A/S	5	400	384			9,25	25,5	

\* (A) Aluminio - Aluminium \*\* (S) Acciaio - Steel

# Relief valve

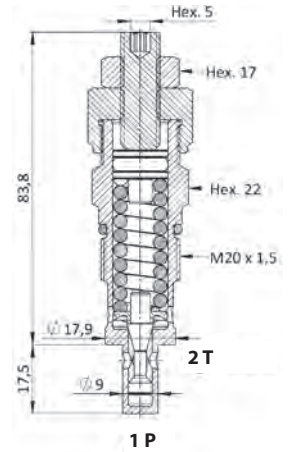
## Ordering code

1	2	3
<b>HCVR.M20</b>	*	*

		*
<b>1</b>	Relief valve, cartridge type, direct acting, M20x1,5	<b>HCVR.M20</b>
<b>2</b>	Direct Acting	<b>D</b>
	Spring 25/110 Bar	<b>Y</b>
<b>3</b>	Spring 50/215 Bar	<b>B</b>
	Spring 100/350 Bar	<b>G</b>

## Performances

Max working pressure	Bar	420
Max flow rate	l/min	30 l/min
Max setting pressure		See table below
Oil temperature	°C	-30 +110
Oil viscosity	cSt	7,4 to 420
Recommended Filtration	micron	15
Weight	Kg	0,175



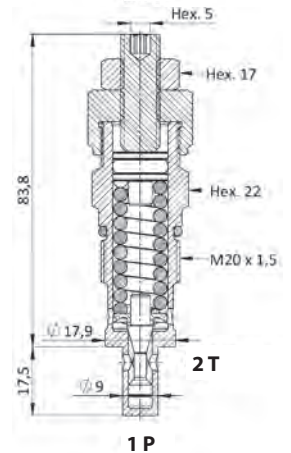
## Ordering code

1	2	3
<b>HCVR.G12</b>	*	*

		*
<b>1</b>	Relief valve, cartridge type, direct acting, G1/2"	<b>HCVR.G12</b>
<b>2</b>	Direct Acting	<b>D</b>
	Spring 25/110 Bar	<b>Y</b>
<b>3</b>	Spring 50/215 Bar	<b>B</b>
	Spring 100/350 Bar	<b>G</b>

## Performances

Max working pressure	Bar	420
Max flow rate	l/min	30 l/min
Max setting pressure		See table below
Oil temperature	°C	-30 +110
Oil viscosity	cSt	7,4 to 420
Recommended Filtration	micron	15
Weight	Kg	0,175



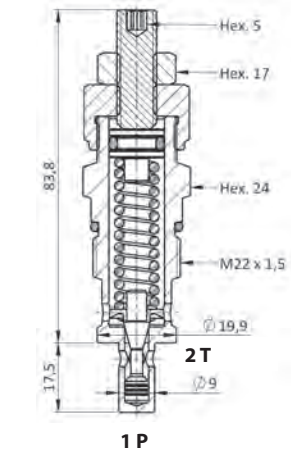
## Ordering code

1	2	3
<b>HCVR.M22</b>	*	*

		*
<b>1</b>	Relief valve, cartridge type, direct acting, M22x1,5	<b>HCVR.M22</b>
<b>2</b>	Direct Acting	<b>D</b>
	Spring 25/110 Bar	<b>Y</b>
<b>3</b>	Spring 50/215 Bar	<b>B</b>
	Spring 100/350 Bar	<b>G</b>

## Performances

Max working pressure	Bar	420
Max flow rate	l/min	30 l/min
Max setting pressure		See table below
Oil temperature	°C	-30 +110
Oil viscosity	cSt	7,4 to 420
Recommended Filtration	micron	15
Weight	Kg	0,210



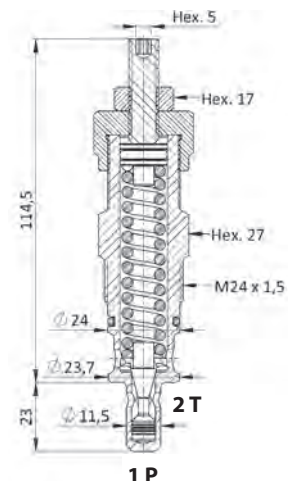
## Ordering code

1	2	3
<b>HCVR.M24</b>	*	*

		*
<b>1</b>	Relief valve, cartridge type, direct acting, G1/2"	<b>HCVR.M24</b>
<b>2</b>	Direct Acting	<b>D</b>
	Spring 25/110 Bar	<b>Y</b>
<b>3</b>	Spring 50/210 Bar	<b>B</b>
	Spring 100/350 Bar	<b>G</b>

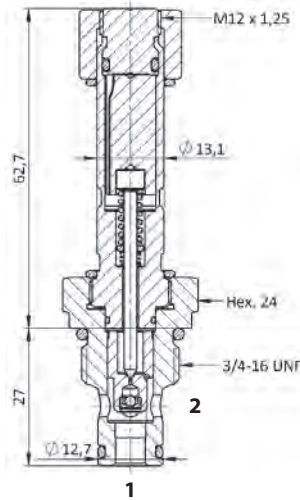
## Performances

Max working pressure	Bar	420
Max flow rate	l/min	80 l/min
Max setting pressure		See table below
Oil temperature	°C	-30 +110
Oil viscosity	cSt	7,4 to 420
Recommended Filtration	micron	15
Weight	Kg	0,350

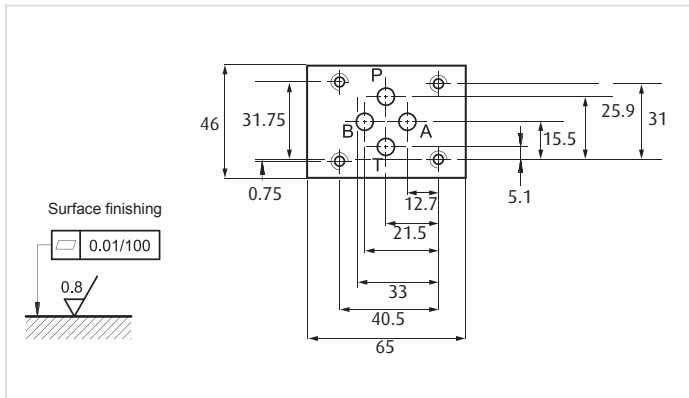


## Ordering code

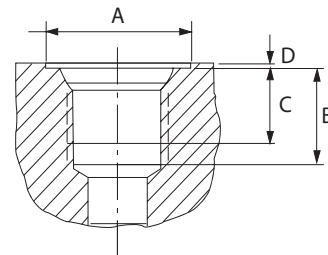
	1	2	3	
	<b>HCVSO.S08</b>	*	*	
<b>1</b>	Solenoid valve, cartridge type, pilot operated, NO SAE08			<b>HCVSO.S08</b>
<b>2</b>	Manuel Override	Omit		<b>0</b>
		Screw		<b>1</b>
		Push and twist		<b>2</b>
		Push pin		<b>3</b>
<b>3</b>	Filter	No filter		<b>N00</b>
		Filter 280 micron		<b>F00</b>



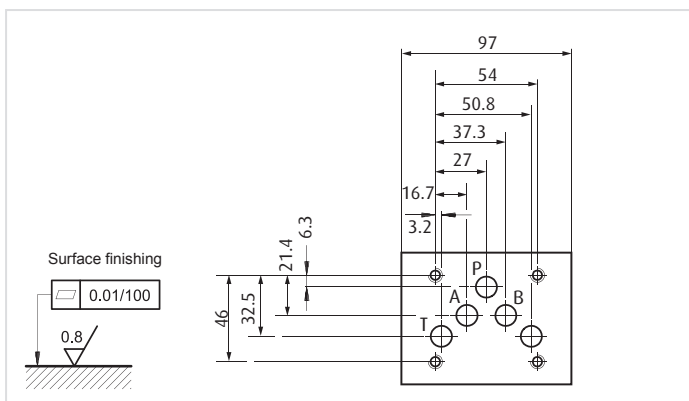
## Cetop 3 - NG6



## Ports DIN3852-2



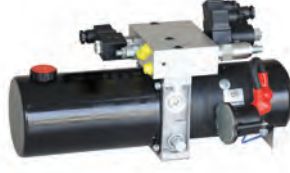
## Cetop 5 - NG10



Threads	A	B	C	D
UNI-ISO 228				
<b>G 1/8</b>	17	13	9	1
<b>G 1/4</b>	22	18	13	1
<b>G 3/8</b>	26	18	13	1
<b>G 1/2</b>	30	21,5	15	1,5
<b>G 3/4</b>	38	23,5	17	1,5
<b>G 1</b>	46	27	19	2
<b>G 1 1/8</b>	57	29	29	2



**OTT**  
HYDRAULIC



## Hydraulic Power Packs



## Hydraulic Valve Manifolds



## Hydraulic Oil Heat Exchangers



## Hydraulic Oil Tank & Accessories

**otto**<sup>®</sup>  
TECHNIC

**OTTO TEKNİK SAN. TİC. LTD .ŞTİ.**

**Head Quarter**

İkitelli OSB, Demirciler San. Sit.  
B1 Blok No:39  
Başakşehir/İSTANBUL/TURKEY  
Phone. : +90212 671 63 07  
E-mail : sales@ottoteknik.com.tr

**Factory**

Sivas OSB 12. Sok. No:1  
SİVAS/TURKEY  
T:+90 346 502 58 60  
E-mail : sivas@ottoteknik.com.tr

